



RHODES
ARCHITECTURAL
STONE
NATURAL STONE EXPERTS

ANTIQUÉ YANGTZE LIMESTONE

Antique Yangtze Limestone, a high-density, fossil-rich limestone, is reclaimed from the region of China's Yangtze River. Since construction of the Three Gorges Dam Project across the Yangtze began over two decades ago, an estimated 1,600 villages along the river's edge have been doomed to be submerged and lost forever. Rhodes Architectural Stone has been able to collect a great store of this exquisite stone

from abandoned homes and school yards for re-use.

Antique Yangtze Limestone carries its original textures of point stalk, pineapple, and split face finishes. Centuries of weathering have developed rich patinas that range in color from toasty beige to sage and charcoal. Richly fossilized, Antique Yangtze Limestone blends seamlessly with New Yangtze Limestone in any application.



RECOMMENDED USES

VENEER

QUOINS

PROJECTS

Colorado Ranch, Keller Winery,
Locksley Hall, Westerleigh Residence

INSTALLATION

Principal setting methods include proprietary wedge anchor setting for dry stack applications or clipped and back-filled veneer systems.



UNITED STATES OF AMERICA
TEL +1 206 709 3000

AUSTRALIA
TEL +61 3 8199 9555

CHINA
TEL +86 592 533 0273

rhodes-stone.com
info@rhodes-stone.com



ANTIQUE YANGTZE LIMESTONE



COLOR/TEXTURE SAMPLE



COLOR/TEXTURE SAMPLE



COLOR/TEXTURE SAMPLE



COLOR/TEXTURE SAMPLE



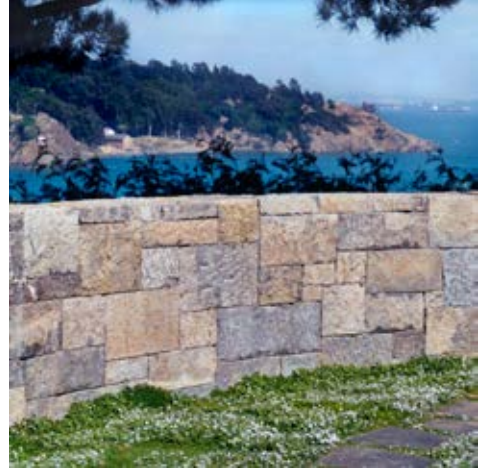
COLOR/TEXTURE SAMPLE



COLOR/TEXTURE SAMPLE

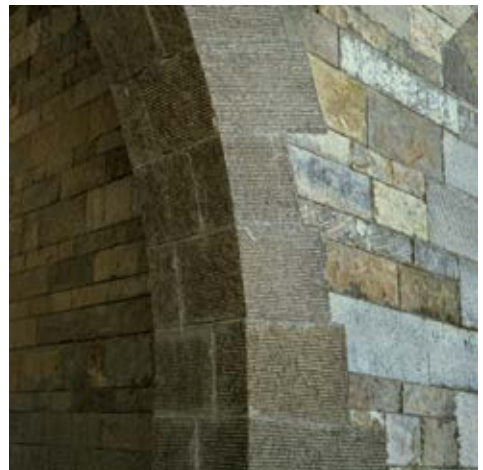
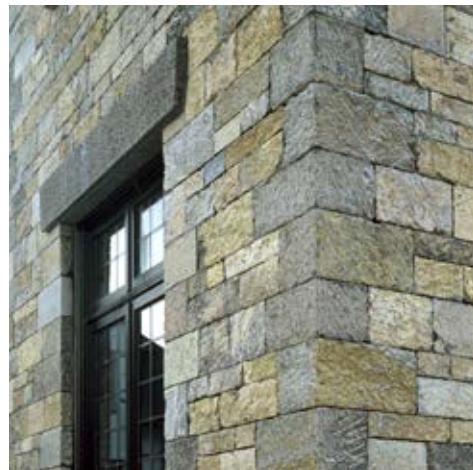


COLOR/TEXTURE SAMPLE



MATERIAL SPECIFICATIONS

STANDARD VENEER : 3" x 8" to 11" x 22"; 2" - 3" thick
75 x 200 mm to 280 x 560 mm; 50 - 75 mm thick



UNITED STATES OF AMERICA
TEL +1 206 709 3000

AUSTRALIA
TEL +61 3 8199 9555

CHINA
TEL +86 592 533 0273

rhodes-stone.com
info@rhodes-stone.com