



**RHODES
ARCHITECTURAL
STONE**
NATURAL STONE EXPERTS

MICROSOFT FOUNTAIN

Creating comfortable gathering points for commerce and collaboration can often prove a challenge since visual interest, material durability and local building codes often seem to work at cross purposes. This solution, a Golden Dune Granite fountain in the plaza center is a great success.

The form of the fountain visually recalls the rugged mountains and valleys of the surrounding countryside. The warm tones of the granite remain inviting, never cold, regardless of the ambient temperature

provided by local weather. The durable granite is virtually invincible to vandalism, freezing weather or chlorine.

As crowds gather to eat lunch, feed the birds or splash with their children, we are reminded of the central place stone occupies in our urban landscape. Durable and expressive when hand finished, Golden Dune Granite resonates with those who experience it. This fountain, provided to the built environment by one of the largest corporations in the world, should please citizens for centuries to come.



PROJECT PRINCIPALS

ARCHITECT
ZGF Architects

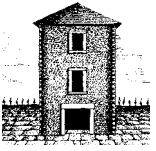


UNITED STATES OF AMERICA
TEL +1 206 709 3000

AUSTRALIA
TEL +61 3 8199 9555

CHINA
TEL +86 592 533 0273

rhodes-stone.com
info@rhodes-stone.com



RHODES
ARCHITECTURAL
STONE
NATURAL STONE EXPERTS

MICROSOFT FOUNTAIN



PROJECT MATERIALS

GOLDEN DUNE GRANITE
Coping, pavements, architectural blocks

STUDIO BLACK GRANITE
Coping



UNITED STATES OF AMERICA
TEL +1 206 709 3000

AUSTRALIA
TEL +61 3 8199 9555

CHINA
TEL +86 592 533 0273

rhodes-stone.com
info@rhodes-stone.com