



**RHODES  
ARCHITECTURAL  
STONE**  
*NATURAL STONE EXPERTS*

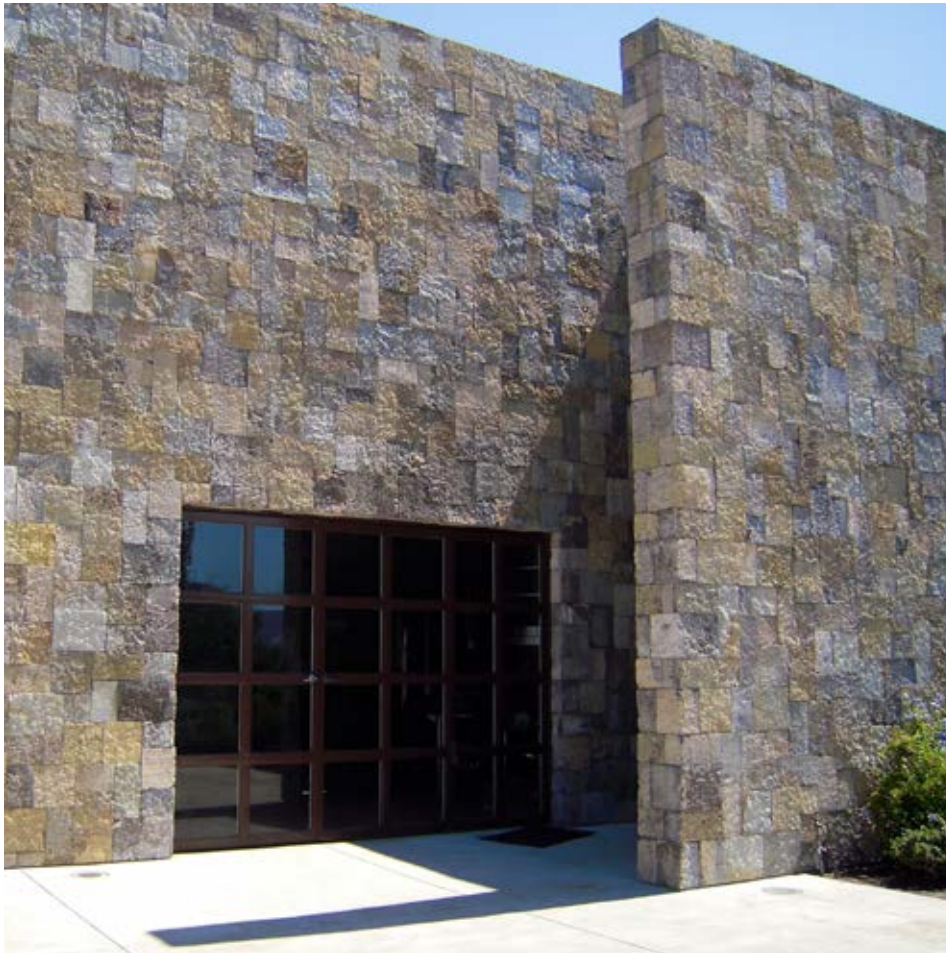
## KELLER WINERY

The rolling hills of Napa, California provide an ideal location for the architecture of Legorreta + Legorreta, the Mexican architects of international renown. Characterized by bold forms with little or no architectural detail or ornament, the work relies almost exclusively on the texture, pattern and quality of the stone façade.

The material, Antique Yangtze Limestone, was rescued from the rising tide of the Three Gorges Dam Project in China. Its unique patina and color come from the differing ages of the recycled structures from which it was salvaged.

Modernist architects often flout the rules of precedent and this stone veneer application is no different. The vertical pieces of the wall pattern suggest paving rather than stone for vertical building, yet within the context of this modern form, the broken rule of bondwork adds interest and a lively counterpoint to the visual expectation the visitor might bring.

The winery is private and part of a much larger estate also designed by Legorreta + Legorreta.



### PROJECT PRINCIPALS

ARCHITECT  
Legorreta + Legorreta

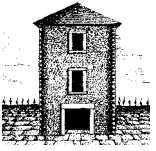


UNITED STATES OF AMERICA  
TEL +1 206 709 3000

AUSTRALIA  
TEL +61 3 8199 9555

CHINA  
TEL +86 592 533 0273

*rhodes-stone.com*  
*info@rhodes-stone.com*



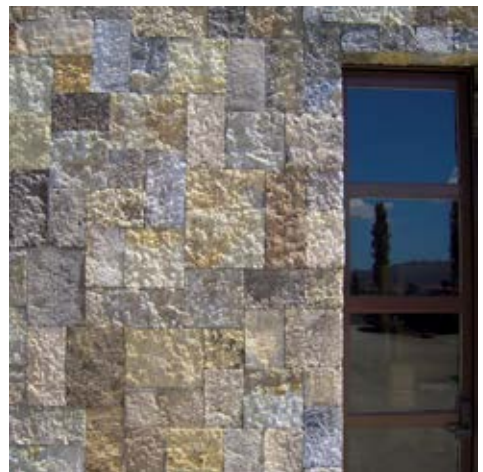
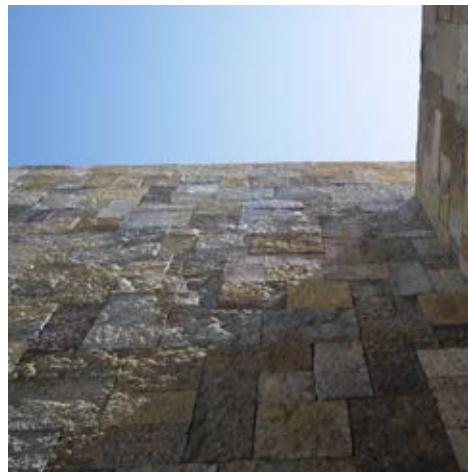
RHODES  
ARCHITECTURAL  
STONE  
*NATURAL STONE EXPERTS*

## KELLER WINERY



### PROJECT MATERIALS

ANTIQUÉ YANGTZE LIMESTONE  
Wall veneer, quoins



UNITED STATES OF AMERICA  
TEL +1 206 709 3000

*rhodes-stone.com*  
*info@rhodes-stone.com*

AUSTRALIA  
TEL +61 3 8199 9555

CHINA  
TEL +86 592 533 0273