



RHODES
ARCHITECTURAL
STONE
NATURAL STONE EXPERTS

GOLDBERG EGGS

AECOM CHILDREN'S HOSPITAL
SCULPTURE COMMISSION

This exciting work by Brad Goldberg was executed in Golden Dune Granite. Six giant egg forms were hand wrought from specially quarried blocks measuring in excess of 6' x 6' x 8' (180cm x 180cm x 240cm) and weighing more than 30 tons (30,000kg) each. Three of the egg forms were split apart and carved out to receive solar reflectors to power the sculpture's lighting.

The eggs were split using an ancient hand technique where 56 square holes were hand-carved into the split line and tempered chisels were driven inwards in series. The resulting jagged texture became a critical visual in the final sculpture.

The hand textures varied from top to bottom in a gradient ranging from honed to modified (extra coarse) pineapple. The photos show the compelling finished form in our China factory.



PROJECT PRINCIPALS

ARTIST
Brad and Diana Goldberg,
Brad J. Goldberg, Inc.

STONE FABRICATION
Rhodes Architectural Stone

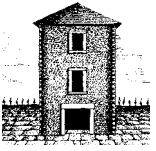


UNITED STATES OF AMERICA
TEL +1 206 709 3000

AUSTRALIA
TEL +61 3 8199 9555

CHINA
TEL +86 592 533 0273

rhodes-stone.com
info@rhodes-stone.com



RHODES
ARCHITECTURAL
STONE
NATURAL STONE EXPERTS

GOLDBERG EGGS



PROJECT MATERIALS

GOLDEN DUNE GRANITE

FINISHES

"YA" splitting G technique with honed,
modified (extra coarse) pineapple finishes



UNITED STATES OF AMERICA
TEL +1 206 709 3000

AUSTRALIA
TEL +61 3 8199 9555

CHINA
TEL +86 592 533 0273

rhodes-stone.com
info@rhodes-stone.com