



RHODES
ARCHITECTURAL
STONE
NATURAL STONE EXPERTS

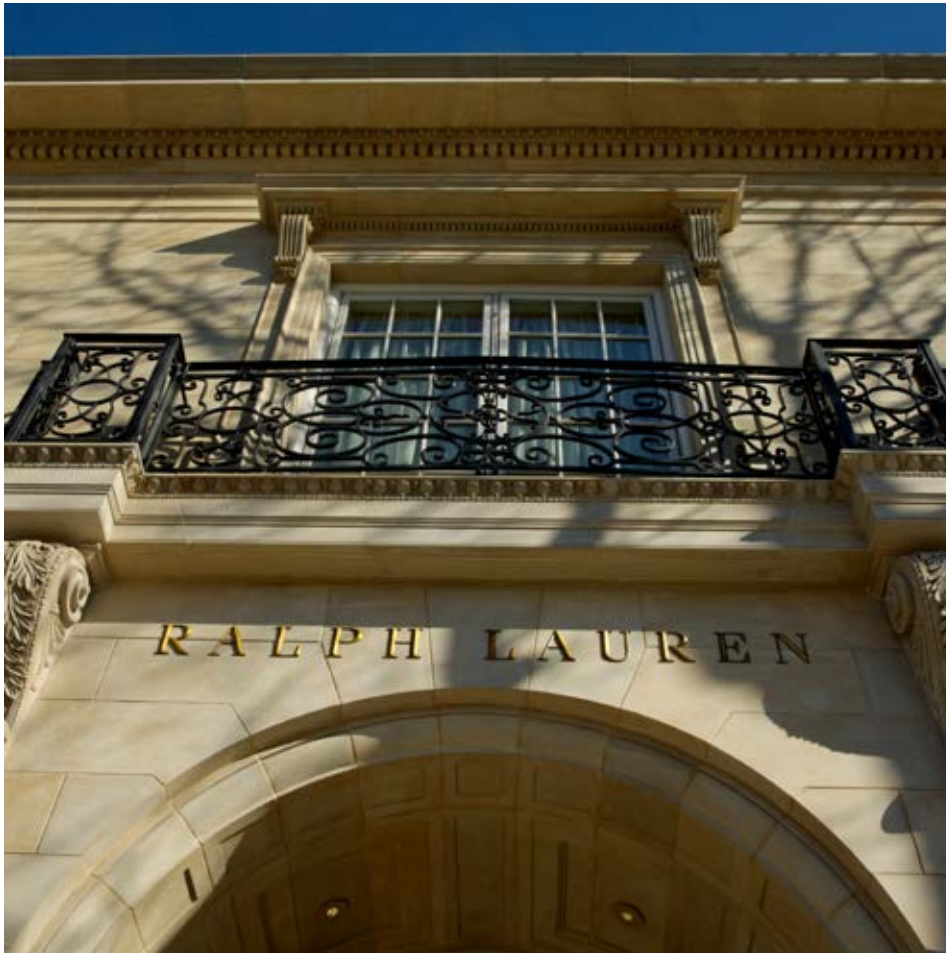
RALPH LAUREN

The flagship store on Greenwich Avenue, Greenwich, Connecticut, continues the long-held tradition of the luxury brand - using the world's top artisans and materials to reflect the quality and refinement of the brand.

The choice of New Pearl Limestone was inspired by its translucent surface, which draws light into the stone making the building glow. Classic detailing and artisan manufacturing and craftsmanship produce

an outstanding building façade: the hand-carved moldings add intricate detail, showcasing the unique and high quality results for which Rhodes Architectural Stone is renowned.

Ralph Lauren's legendary eye for grace and beauty has created a masterpiece of architecture and commerce. Widely published and awarded for honors far and wide, we are proud to have contributed to this project's significant success.



PROJECT PRINCIPALS

ARCHITECT
Halper Architects LLC



UNITED STATES OF AMERICA
TEL +1 206 709 3000

AUSTRALIA
TEL +61 3 8199 9555

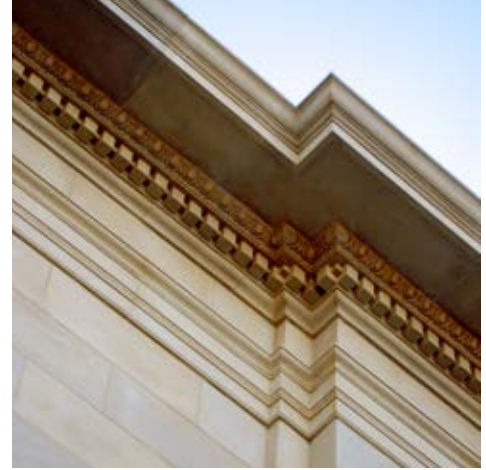
CHINA
TEL +86 592 533 0273

rhodes-stone.com
info@rhodes-stone.com



RHODES
ARCHITECTURAL
STONE
NATURAL STONE EXPERTS

RALPH LAUREN



PROJECT MATERIALS

NEW PEARL LIMESTONE
Wall veneer, balustrade, egg and dart moldings, carved brackets, coffered ceiling and wall panels, radius moldings, architectural ornaments



UNITED STATES OF AMERICA
TEL +1 206 709 3000

AUSTRALIA
TEL +61 3 8199 9555

CHINA
TEL +86 592 533 0273

rhodes-stone.com
info@rhodes-stone.com