



RHODES
ARCHITECTURAL
STONE
NATURAL STONE EXPERTS

TACOMA ART MUSEUM

The untitled public sculpture at the center of the Tacoma Art Museum (2003) is Richard Rhodes' largest public sculpture and best known work to date. Often described as the "heart" of the museum for its asymmetrical shape and location, the work forms the central courtyard from which the museum galleries are explored in series.

The first view of the work is two-dimensional as the museum visitor enters the building but only experiences a reflected slice of work in a giant, full-height angled mirror. At this viewing distance, the work appears a modernist painting in tune with the more

conceptual notions of Antoine Predock, the museum's architect.

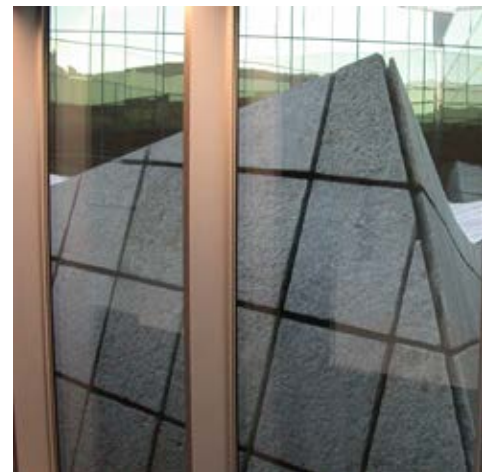
However, as we move toward the galleries, the prow of "wave", as it has become known, darkens the entrance to the perimeter walkway, continuing to obscure the viewer's grasp of the larger sculpture. Surprises await the viewer as the reflective mirrored glass modifies the view and expands the experience. Ultimately the perception of the work is altered as the museum is explored; a metaphor for the experience of how art expands and changes both the internal and external perspective of the participant.



PROJECT PRINCIPALS

ARCHITECT
Antoine Predock Architect

ARTISTS
Untitled - Stone Wave, Richard Rhodes,
Rhodesworks Design Studio
Glass Nijjima Floats, Dale Chihuly



UNITED STATES OF AMERICA
TEL +1 206 709 3000

AUSTRALIA
TEL +61 3 8199 9555

CHINA
TEL +86 592 533 0273

rhodes-stone.com
info@rhodes-stone.com



RHODES
ARCHITECTURAL
STONE
NATURAL STONE EXPERTS

TACOMA ART MUSEUM



PROJECT MATERIALS

ANTIQUÉ PEWTER GRANITE



UNITED STATES OF AMERICA
TEL +1 206 709 3000

rhodes-stone.com
info@rhodes-stone.com

AUSTRALIA
TEL +61 3 8199 9555

CHINA
TEL +86 592 533 0273