



RHODES
ARCHITECTURAL
STONE
NATURAL STONE EXPERTS

PEPPER GRANITE

This foundational granite sits solidly at the core of our collection. While unobtrusive and largely neutral in color, Pepper Granite still contains large quartz crystals that lend it warmth and depth. It performs like a standard building block, but it is greatly enhanced by the attractive liberal flecking of black mica, giving the stone its name. Like the well-worn handle on a favorite tool, Pepper Granite is stable, predictable, and economical. It functions quietly, strongly, and is extremely durable. Pepper

Granite excels especially in robust building structures since this understated, classic stone will never go out of fashion. Although available in all our hand finishes, spit face and point stalk best show the warmth and depth of Pepper Granite's subtle surface. Available in over-sized formats as required, it is ideal for a full range of applications. Due to its attractiveness, durability, and exceptionally reasonable price, Pepper Granite is often set as pavers in driveways and roads to great effect.

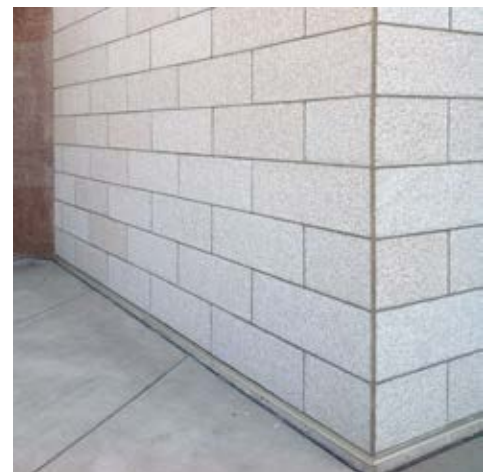


RECOMMENDED USES

- | | |
|-----------------|----------------|
| PAVERS | CARVED OBJECTS |
| VENEER | COLUMNS |
| STAIR BLOCKS | SINKS / TUBS |
| QUOINS | SLABS |
| COPING / CAPS | COBBLESTONES |
| CURBS | DRAIN GRATES |
| SILLS / LINTELS | |

INSTALLATION

Pepper Granite may be installed in all standard setting techniques - mortar or thinset on slab or by sand setting.



UNITED STATES OF AMERICA
 TEL +1 206 709 3000

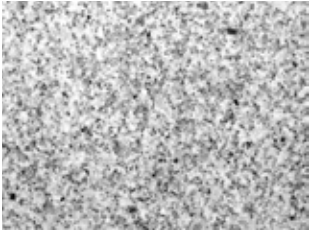
AUSTRALIA
 TEL +61 3 8199 9555

CHINA
 TEL +86 592 533 0273

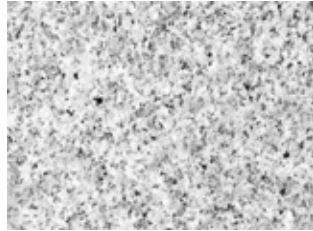
rhodes-stone.com
info@rhodes-stone.com



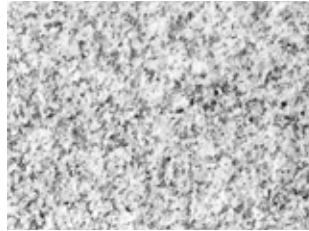
PEPPER GRANITE



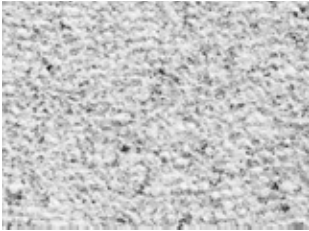
HONED
 min thickness - 0.75" / 20 mm



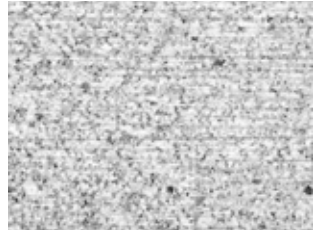
SAND BLASTED
 min thickness - 0.75" / 20 mm



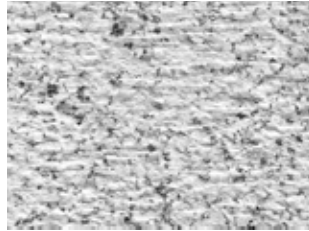
FLAMED
 min thickness - 0.75" / 20 mm



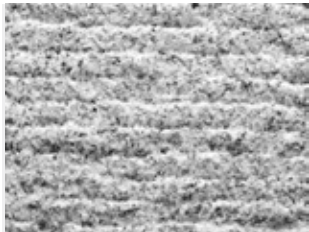
BUSH HAMMER
 min thickness - 1.5" / 38 mm



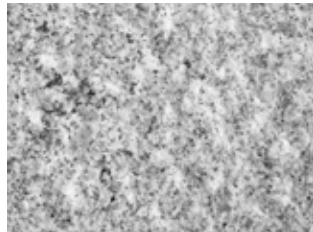
FINE ADZE
 min thickness - 1" / 25 mm



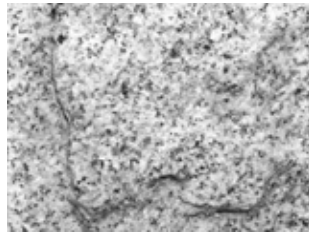
COARSE ADZE
 min thickness - 2" / 50 mm



2 POINT STALK
 min thickness - 2" / 50 mm



PINEAPPLE
 min thickness - 3" / 75 mm



SPLIT
 min thickness - 2.5" / 64 mm

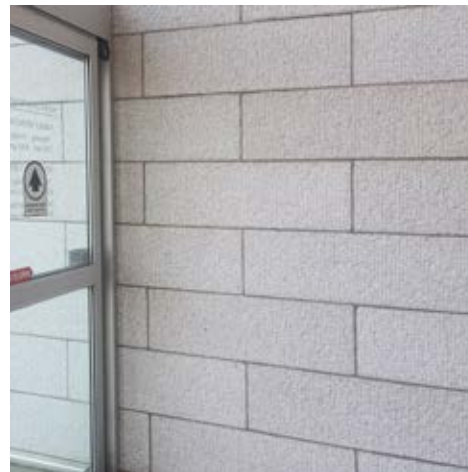
MATERIAL SPECIFICATIONS

STANDARD BLOCK : 92" x 38" x 34"
 2335 x 965 x 864 mm

MAX SPECIAL BLOCK : 138" x 46" x 30"
 3505 x 1168 x 762 mm

STANDARD VENEER : 3" x 3" to 16" x 26"; 3" thick
 75 x 75 mm to 406 x 660 mm; 75 mm thick

STANDARD PAVERS :
 12" x 12" to 24" x 30"; 0.75" - 3" thick
 300 x 300 mm to 600 x 750 mm; 20 - 75 mm thick



TECHNICAL DATA

ASTM	TEST	
C666	freeze thaw	0.08 %
C97	absorption	0.35 %
C97	bulk gravity	164.2 lbs/ft ³ 2,631 kg/m ³
C99	mod. of rupture	1,800 psi 12.4 MPa
C170	compressive strength	16,254 psi 112.0 MPa
C880	flexural strength	1,600 psi 11.0 MPa

UNITED STATES OF AMERICA
 TEL +1 206 709 3000

AUSTRALIA
 TEL +61 3 8199 9555

CHINA
 TEL +86 592 533 0273

rhodes-stone.com
info@rhodes-stone.com