



ANTIQUE HIGHLAND PORPHYRY

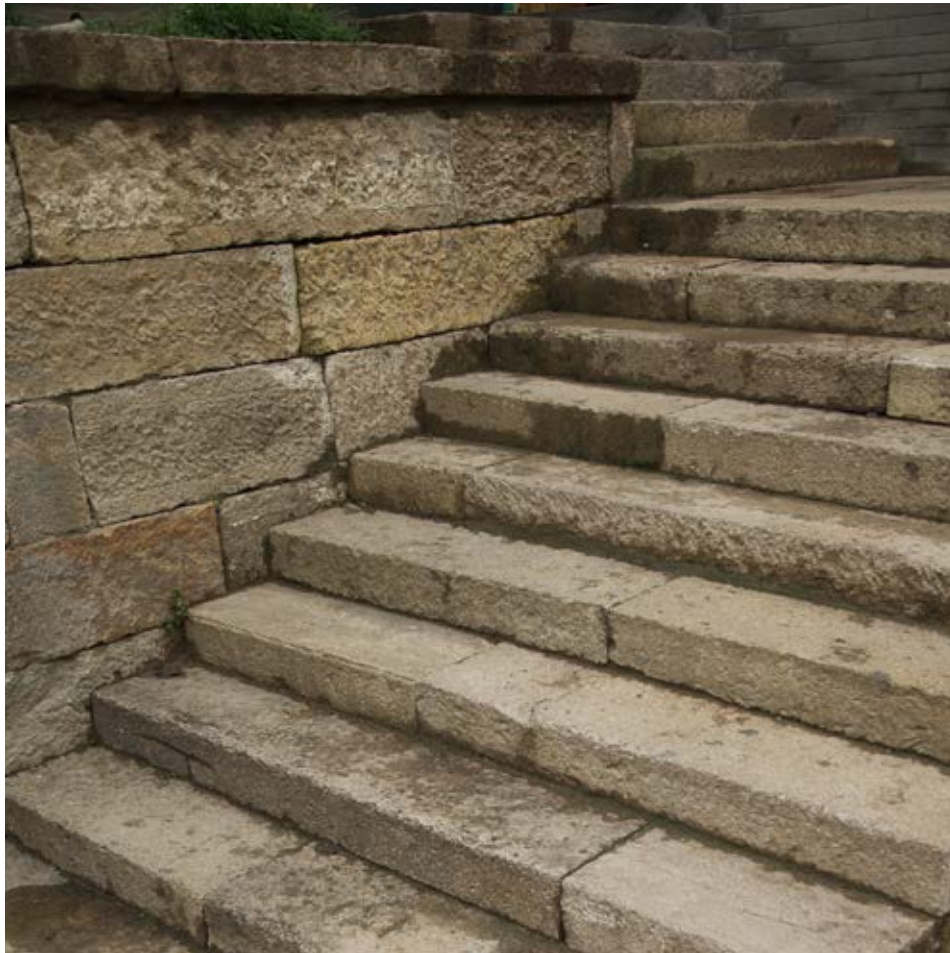
Distinguished by its extremely large format, Antique Highland Porphyry stands alone in the antique stone market without peer or parallel. The warm earth tones vary from piece to piece creating a visual tapestry in the hardscape. Worn and uneven underfoot, the pavements remind its audience of the centuries of the human dramas played out on its surface.

The Porphyry's unusual sizing makes it available for almost all architectural

masonry elements: wall veneer, quoins, solid stair treads and even copings.

The material is extremely dense allowing it to easily withstand auto traffic as well as the freeze thaw cycles of colder climates. The low absorption also makes it impervious to salt and chemical ice melt.

Antique Highland Porphyry may be set in sand or gauged and mortar set.



RECOMMENDED USES

PAVERS	COPING / CAPS
VENEER	CURBS
QUOINS	SILLS / LINTELS
STAIR TREADS	

INSTALLATION

Antique Highland Porphyry can be set in sand or gauged and mortar set.



UNITED STATES OF AMERICA
TEL +1 206 709 3000

rhodes-stone.com
info@rhodes-stone.com

AUSTRALIA
TEL +61 3 8199 9555

CHINA
TEL +86 592 533 0273



ANTIQUÉ HIGHLAND PORPHYRY



COLOR/TEXTURE SAMPLE



COLOR/TEXTURE SAMPLE



COLOR/TEXTURE SAMPLE



COLOR/TEXTURE SAMPLE



COLOR/TEXTURE SAMPLE



COLOR/TEXTURE SAMPLE



COLOR/TEXTURE SAMPLE



COLOR/TEXTURE ARRAY

MATERIAL SPECIFICATIONS

STANDARD PAVERS :

12" x 12" to 20" x 40"; 1" – 2" thick
300 x 300 mm to 500 x 1000 mm; 25 - 50 mm thick

OVERSIZED PAVERS :

24" x 36" to 30" x 72"; 2" – 3" thick
600 x 900 mm to 750 x 1800 mm; 50 - 75 mm thick

STANDARD VENEER :

3" x 8" to 14" x 36"; 2" – 3" thick
75 x 200 mm to 350 x 900 mm; 50 - 75 mm thick

STANDARD STAIR BLOCK :

14" x 24" to 21" x 42"; 2" – 7" thick
350 x 600 mm to 500 x 1000 mm; 50 - 180 mm thick



TECHNICAL DATA

ASTM	TEST	
C97	absorption	1.85 %
C97	bulk gravity	151.08 lbs/ft ³ 2420 kg/m ³
C99	mod. of rupture	1,726 psi 11.9 MPa
C170	compressive strength	9,500 psi 65.5 MPa
C880	flexural strength	1,030 psi 7.1 MPa

UNITED STATES OF AMERICA
TEL +1 206 709 3000

AUSTRALIA
TEL +61 3 8199 9555

CHINA
TEL +86 592 533 0273

rhodes-stone.com
info@rhodes-stone.com