



**RHODES
ARCHITECTURAL
STONE**
NATURAL STONE EXPERTS

MADRONA RESIDENCE

Located on the shores of Lake Washington, Seattle, this 100 year-old residence was in need of a garden redesign to enable its owners to relax and enjoy the peaceful surrounds of their new home.

Antique Yangtze Limestone was chosen as a perfect complement to the garden: the lighter tones of this magnificent stone easily showcasing the varying green shades of the lush English country-style garden.

The random point stalk finish of the Antique Yangtze Limestone softens the visual effect and showcases one of the traditional techniques for gauging stone. The occasional ancient fossils visible throughout the stone are particularly eye catching, adding to the stunning variation and interest of the final product.



PROJECT PRINCIPALS

LANDSCAPE ARCHITECT
BA Designs

STONE DESIGN
Rhodes Architectural Stone

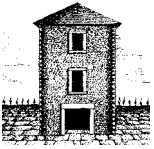


UNITED STATES OF AMERICA
TEL +1 206 709 3000

AUSTRALIA
TEL +61 3 8199 9555

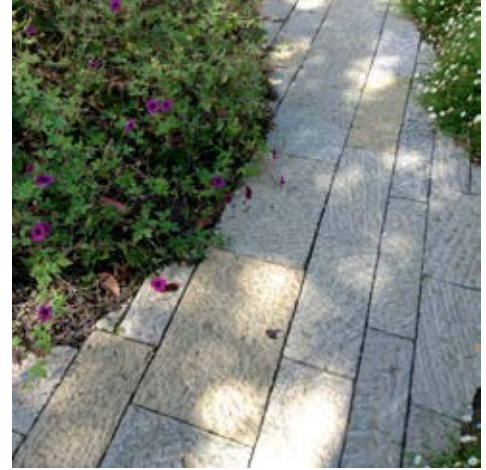
CHINA
TEL +86 592 533 0273

rhodes-stone.com
info@rhodes-stone.com



RHODES
ARCHITECTURAL
STONE
NATURAL STONE EXPERTS

MADRONA RESIDENCE



PROJECT MATERIALS

ANTIQUÉ YANGTZE LIMESTONE
Pavers



UNITED STATES OF AMERICA
TEL +1 206 709 3000

AUSTRALIA
TEL +61 3 8199 9555

CHINA
TEL +86 592 533 0273

rhodes-stone.com
info@rhodes-stone.com