



RHODES  
ARCHITECTURAL  
STONE  
NATURAL STONE EXPERTS

## DRUMLIN HALL

Winner of the 2012 Stanford White Awards for Excellence in Classical and Traditional Design, Drumlin Hall in Dutchess County New York is a masterful architectural work by Peter Penoyer. Recalling the Palladian Villas and conceived within the strict precepts of Vitruvius' classical orders, Penoyer's contribution is both erudite and restrained.

The delicate tones of the Silk Road Sandstone provide volume and intricate detail to this special home. The subtle variations in the stone invoke a calming and warm welcome.

Sitting on a base of Golden Dune Granite, the home is protected from winter snow and ice. The granite base provides a suitable pedestal, uplifting the home to the prominence it deserves, to be viewed and admired from the valley below.

The granite walls continue far into the landscape drawing structure out of the rolling hills and farmland of the larger valley. The effect of the stone is stunning: Drumlin Hall really is one of a kind.



### PROJECT PRINCIPALS

ARCHITECT  
Peter Penoyer Architects

DECORATOR  
Thomas Jayne, Jayne Design Studio



UNITED STATES OF AMERICA  
TEL +1 206 709 3000

AUSTRALIA  
TEL +61 3 8199 9555

CHINA  
TEL +86 592 533 0273

*rhodes-stone.com*  
*info@rhodes-stone.com*



RHODES  
ARCHITECTURAL  
STONE  
NATURAL STONE EXPERTS

## DRUMLIN HALL



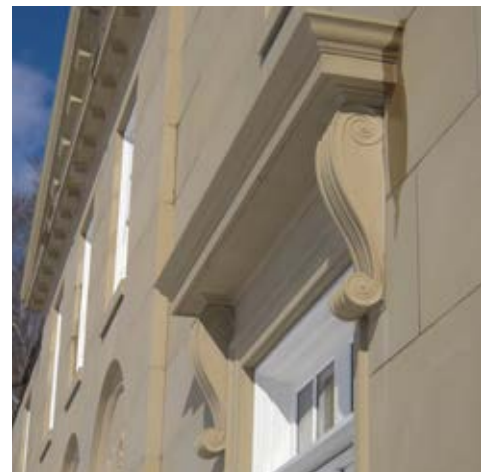
### PROJECT MATERIALS

#### SILK ROAD SANDSTONE

Wall veneer, quoins, carved lintels, columns, sills, brackets, urns, ornament

#### GOLDEN DUNE GRANITE

Wall veneer, pavements, wall caps, stair treads



UNITED STATES OF AMERICA  
TEL +1 206 709 3000

AUSTRALIA  
TEL +61 3 8199 9555

CHINA  
TEL +86 592 533 0273

*rhodes-stone.com*  
*info@rhodes-stone.com*