

RHODES  
ARCHITECTURAL  
STONE  
*NATURAL STONE EXPERTS*

## TOORAK HOUSE

This immaculate home in Melbourne’s Toorak harmoniously blends antique and newly quarried stone in an outdoor setting. While Antique Salmon Granite and Antique Pewter Granite stair treads and paving create a warm welcome at the home’s entrance, they continue in the back garden, providing a welcoming invitation to enjoy the rear terrace, encased by overhanging vines, and providing shade and tranquillity in abundance.

In Australia no garden is complete without a barbecue; this one particularly special. It

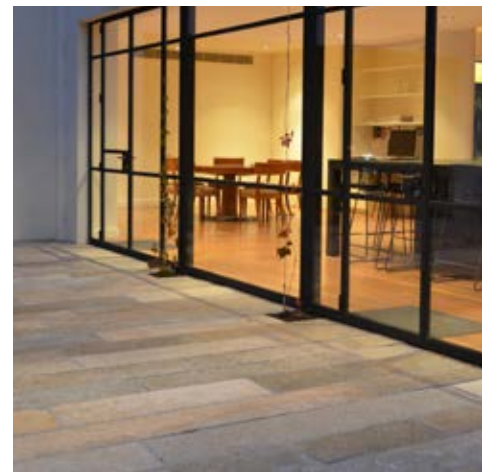
is framed in a combination of the Antique Granites, well paired with Golden Dune Granite, finished in handcrafted split face and honed textures, and lined with North Ankar Firebrick inside.

A delightful pool setting complements the design, crafted from Heron’s Egg Granite, complete with a pool wall containing custom honed ‘domes’, honed waterline tiles, bush hammered wall caps and a split face veneer. It is a true masterpiece.



**PROJECT PRINCIPALS**

LANDSCAPE DESIGNER  
Eckersley Garden Architecture in conjunction with Rhodes Architectural Stone



UNITED STATES OF AMERICA  
TEL +1 206 709 3000

AUSTRALIA  
TEL +61 3 8199 9555

CHINA  
TEL +86 592 533 0273

*rhodes-stone.com*  
*info@rhodes-stone.com*



RHODES  
ARCHITECTURAL  
STONE  
NATURAL STONE EXPERTS

## TOORAK HOUSE



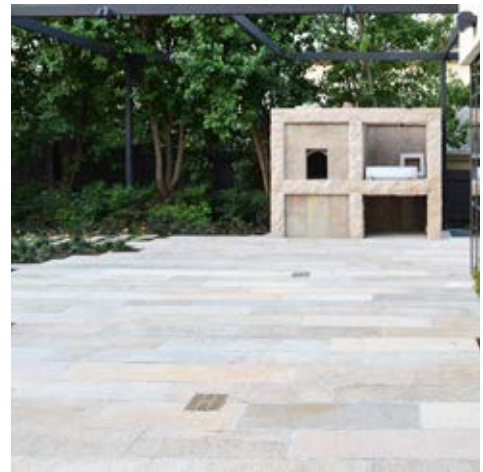
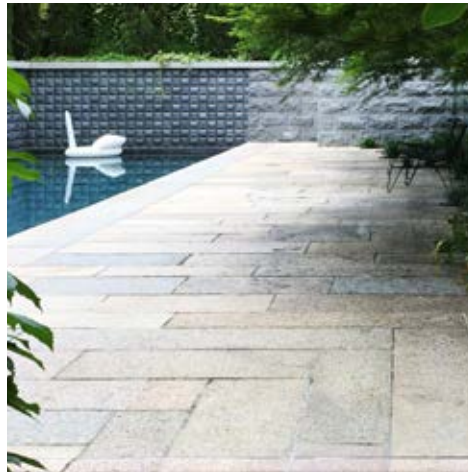
### PROJECT MATERIALS

ANTIQUÉ PEWTER & SALMON LIMESTONE  
Paving, stair treads, barbecue

GOLDEN DUNE GRANITE  
Barbecue

HERON'S EGG GRANITE  
Pool wall, dome, waterline tiles,  
wall caps and veneer

NORTH ANKAR FIREBRICK  
Barbecue



UNITED STATES OF AMERICA  
TEL +1 206 709 3000

AUSTRALIA  
TEL +61 3 8199 9555

CHINA  
TEL +86 592 533 0273

[rhodes-stone.com](http://rhodes-stone.com)  
[info@rhodes-stone.com](mailto:info@rhodes-stone.com)