



**RHODES
ARCHITECTURAL
STONE**
NATURAL STONE EXPERTS

WESTERLEIGH RESIDENCE

Built in the grand style of an English country manor house, this residence in Greenwich, Connecticut is one of the largest homes built in modern times in the US. The floor plan cuts in and out, creating private courtyards, gardens and many visual surprises. With 286 separate elevations on the residence, the steady repeat of the stone language successfully showcases the complexity of the architecture.

More than 200 containers, or 3,400 pallets, of antique and hand-crafted stone material

created the stone veneer and hardscape, with stone design and detailing driven by Rhodes Architectural Stone.

This visually stunning project seamlessly blends old with new. While the external walls predominantly use Antique Yangtze Limestone recycled from the flood zone of the Three Gorges Dam Project in China, the dimensional stone pieces are hand fabricated and hand textured from newly quarried New Yangtze Limestone sourced from the same area.



PROJECT PRINCIPALS

ARCHITECT
Jeffrey R. Matz Architects, Gary Neil Savitsky

INTERIOR ARCHITECT
Anne Kalla, Cicognani Kalla Architect

LANDSCAPE ARCHITECT
Ed Hollander, Edmund Hollander
Landscape Architects

STONE DESIGN
Rhodes Architectural Stone

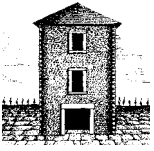


UNITED STATES OF AMERICA
TEL +1 206 709 3000

AUSTRALIA
TEL +61 3 8199 9555

CHINA
TEL +86 592 533 0273

rhodes-stone.com
info@rhodes-stone.com



RHODES
ARCHITECTURAL
STONE
NATURAL STONE EXPERTS

WESTERLEIGH RESIDENCE

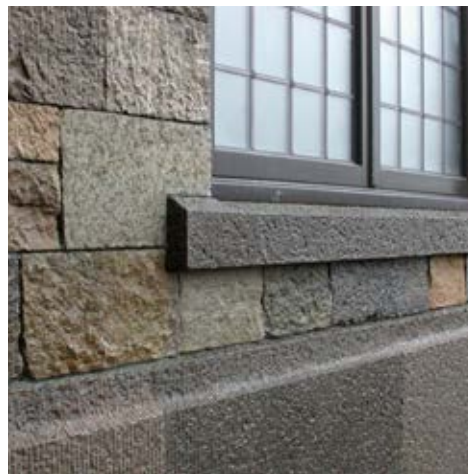


PROJECT MATERIALS

ANTIQUY YANGTZE LIMESTONE
Wall veneer, quoins, arch quoins

NEW YANGTZE LIMESTONE
Plinth base, carved cornice molding,
coping and pier caps, lintels, sills, eave
blocks, window and door trim, stair blocks,
spa tile, arch quoins, landscape veneer,
quoins

ANTIQUY PEWTER GRANITE
Stair blocks, square pavements, pool tile,
pool coping



UNITED STATES OF AMERICA
TEL +1 206 709 3000

rhodes-stone.com
info@rhodes-stone.com

AUSTRALIA
TEL +61 3 8199 9555

CHINA
TEL +86 592 533 0273