



RHODES
ARCHITECTURAL
STONE
NATURAL STONE EXPERTS

RIVER BLACK QUARTZITE

Geologically rare, this exotic jet-black quartzite has an unusual, bottomless presence. Composed of billions of fine individual grains of black sandstone washed, compressed and welded together by hundreds of millions of years of heat and pressure, the result is unique and timeless.

Strong and durable, the quartzite withstands heavy weather and heavy foot traffic. Its dense structure flawlessly retains carved details and crisp arises. Even when hand finished, it will not refract light, so tool marks lend texture but

minimize color variation. No other building stone has such amazing characteristics.

Like all quartzite, River Black Quartzite is inert - it is not affected by chlorine and will not discolor with pollution or acid rain. When wet, the stone has a striking jet-black sheen. It is often used as a border to highlight other materials, bringing out the depths of fountains and pools. In fact, modern architecture often draws on its pure color to contrast with glass and stainless steel.



RECOMMENDED USES

PAVERS	DRAIN GRATES
VENEER	CARVED OBJECTS
QUOINS	COLUMNS
COPING / CAPS	SINKS/TUBS
CURBS	SLABS
SILLS / LINTELS	COBBLESTONES

PROJECTS

Hong Kong Villa

INSTALLATION

River Black Quartzite may be installed in all standard setting techniques - mortar or thinset on slab or by sand setting.



UNITED STATES OF AMERICA
 TEL +1 206 709 3000

AUSTRALIA
 TEL +61 3 8199 9555

CHINA
 TEL +86 592 533 0273

rhodes-stone.com
info@rhodes-stone.com



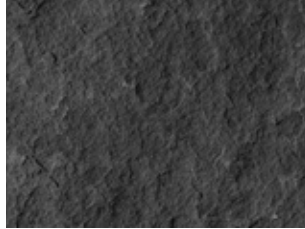
RIVER BLACK QUARTZITE



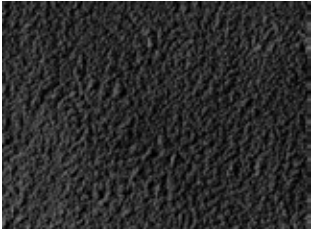
HONED
 min thickness - 0.75" / 20 mm



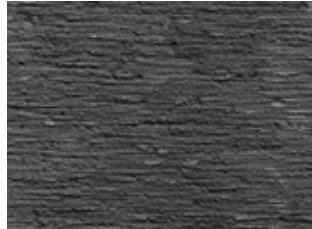
SAND RUBBED
 min thickness - 0.75" / 20 mm



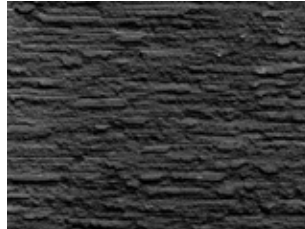
FLAMED
 min thickness - 0.75" / 20 mm



BUSH HAMMER
 min thickness - 1.5" / 38 mm



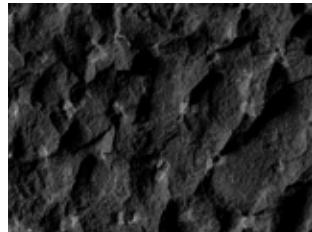
FINE ADZE
 min thickness - 1.5" / 38 mm



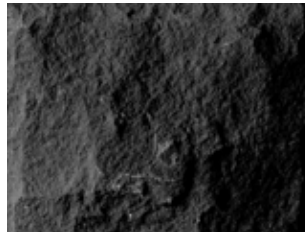
COARSE ADZE
 min thickness - 2.5" / 64 mm



2 POINT STALK
 min thickness - 2.5" / 64 mm



PINEAPPLE
 min thickness - 3" / 75 mm



SPLIT
 min thickness - 3" / 75 mm

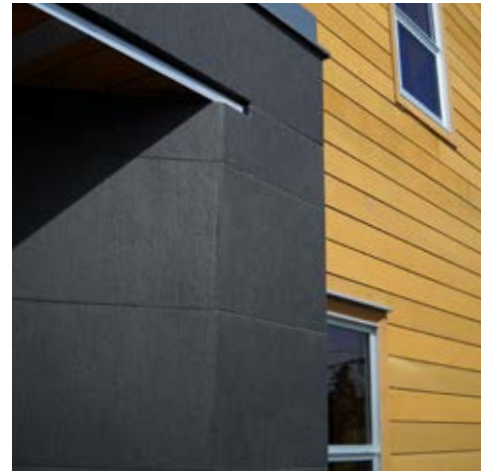
MATERIAL SPECIFICATIONS

STANDARD BLOCK : 60" x 24" x 16"
 1500 x 600 x 400 mm

MAX SPECIAL BLOCK : 80" x 32" x 16"
 2000 x 800 x 400 mm

STANDARD VENEER : 3" x 8" to 16" x 26"; 2" - 3" thick
 75 x 200 mm to 400 x 650 mm; 50 - 75 mm thick

STANDARD PAVERS :
 12" x 12" to 24" x 30"; 0.75" - 3" thick
 300 x 300 mm to 600 x 750 mm; 20 - 75 mm thick



TECHNICAL DATA

ASTM	TEST	
C666	freeze thaw	0.42 %
C97	absorption	0.61 %
C97	bulk gravity	165 lbs/ft ³ 2,642 kg/m ³
C99	mod. of rupture	2,523 psi 17.4 MPa
C170	compressive strength	20,735 psi 143 MPa
C880	flexural strength	2,465 psi 17.0 MPa
C241	abrasion resistance	12 Ha

UNITED STATES OF AMERICA
 TEL +1 206 709 3000

AUSTRALIA
 TEL +61 3 8199 9555

CHINA
 TEL +86 592 533 0273

rhodes-stone.com
info@rhodes-stone.com